

Ben Allman  
Estate & Letting Agents



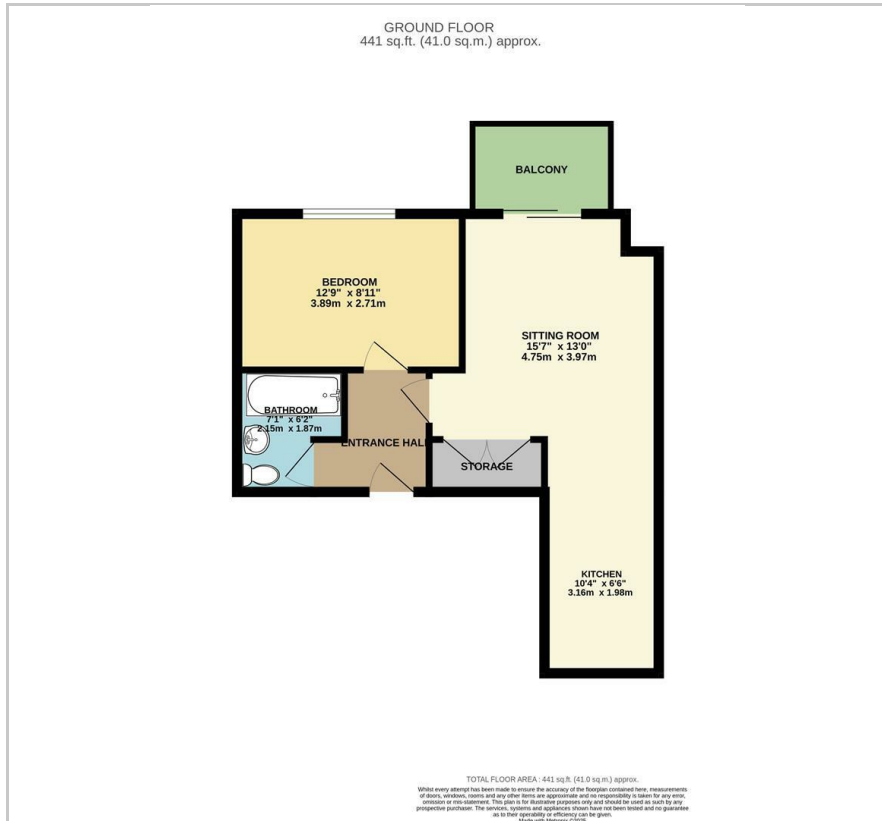
27 Austin House King Street

, Norwich, NR1 1FW

Guide price £64,800



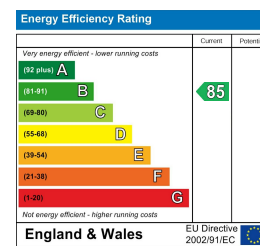
## Floor Plan



## Area Map



## Energy Efficiency Graph



## Viewing

Please contact our Ben Allman Estate Agents Office on 01603 555577 if you wish to arrange a viewing appointment for this property or require further information.

- 40% Shared Ownership
- Balcony Overlooking Beautifully Manicured Communal Gardens
- Rental Payment For Remaining Share Of £264 And Service Charge Of £115 (Total £379 Monthly)
- Modern Open-Plan Layout
- Walking Distance To Norwich City Centre, Norwich Train Station And Riverside Retail Park
- One Bedroom First Floor Apartment
- Lease Length - 122 Years Remaining
- Excellent Riverside Location
- Ample Storage Options
- No Parking Is Available With This Property



Modern Living Made Accessible – 40% Shared Ownership Opportunity at Austin House.

Step onto the property ladder with this stylish and contemporary first-floor apartment, offered at an affordable 40% shared ownership in the sought-after Riverside complex. Austin House is ideally located just moments from Riverside Retail Park, the River Wensum, and Norwich Train Station, this home places convenience and connectivity at your fingertips.

Inside, the apartment features a bright, open-plan living space with integrated appliances and a sleek, modern finish. A private balcony terrace seamlessly extends the living area with views across the beautifully manicured communal gardens.

With a spacious double bedroom, a contemporary bathroom, and thoughtful touches throughout, this home is a low-maintenance opportunity for those wanting to enjoy the benefits of a central location.

Whether you're commuting, exploring the riverside, or enjoying the historic city centre just a short stroll away, this is city-edge living at its best.



These particulars, whilst believed to be accurate are set out as a general outline only for guidance and do not constitute any part of an offer or contract. Intending purchasers should not rely on them as statements of representation of fact, but must satisfy themselves by inspection or otherwise as to their accuracy. No person in this firm's employment has the authority to make or give any representation or warranty in respect of the property.

2B Spowston Road, Norwich, Norfolk, NR3 4QN  
Tel: 01603 555577 Email: enquiries@baela.co.uk www.baela.co.uk